

CERTIFICATE
 CERTIFIED THAT THE PLOT LAYOUT REFERENCE WAS SURVEYED BY ME ON 12/07/2023 AND THE DIMENSION OF THE SIDES ETC OF PLOT STATE ON PLAN AREA AS MEASURED ON SITE AND THE STATED IN DOCUMENT OF OWNERSHIP T.P. RECORD.

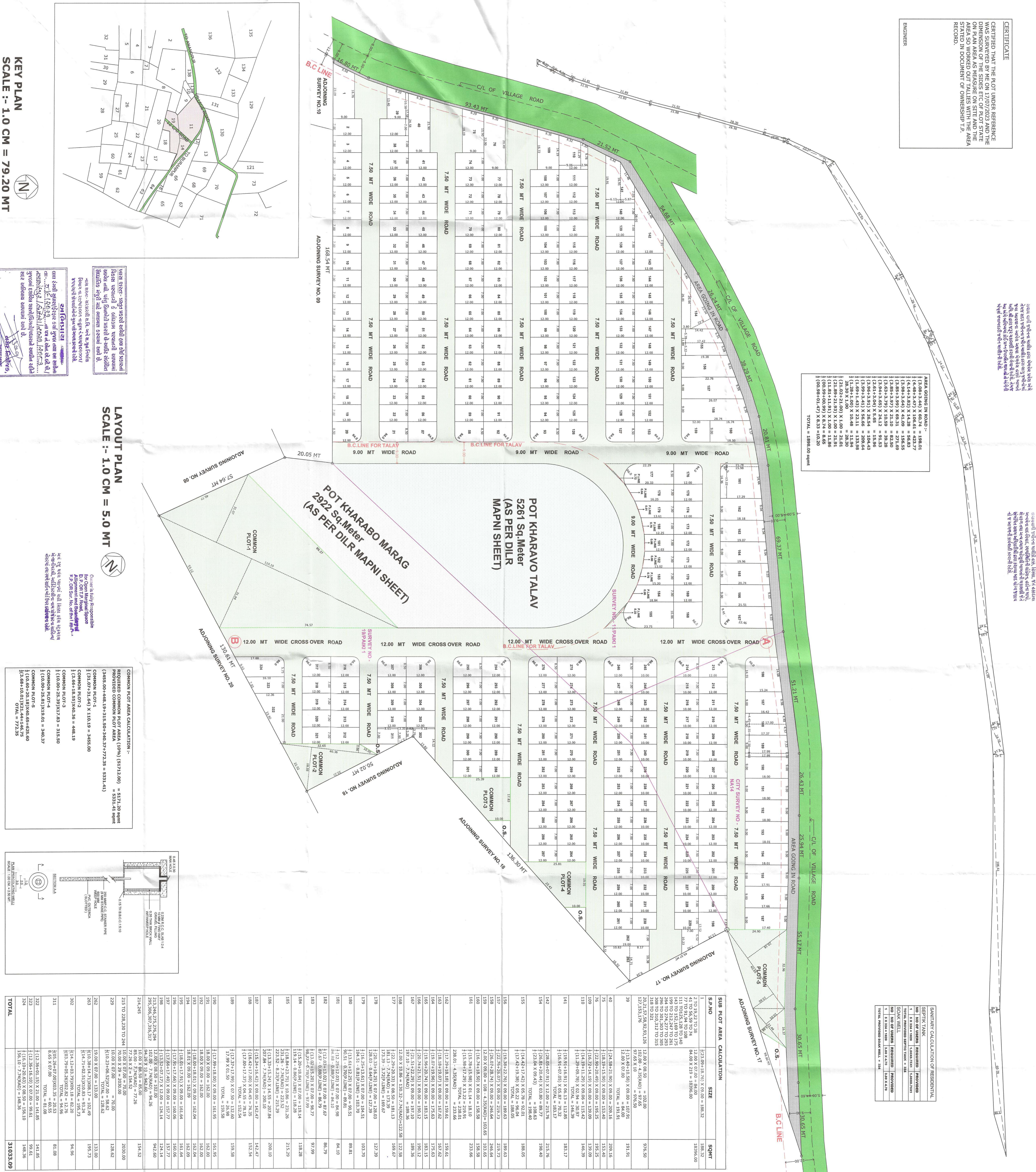
ENGINEER

یہ نقشہ صرف رہنمائی کے لیے ہے اور اسے اس طرح استعمال نہیں کیا جائے گا جس سے کوئی نقصان ہو سکے۔ اس نقشے کی کاپیوں کی خرید و فروخت ممنوع ہے۔

این نقشہ صرف رہنمائی کے لیے ہے اور اسے اس طرح استعمال نہیں کیا جائے گا جس سے کوئی نقصان ہو سکے۔ اس نقشے کی کاپیوں کی خرید و فروخت ممنوع ہے۔

AREA GOING IN ROAD -

1. (4.44+3.92) X 14.28 = 96.63
2. (4.44+3.47) X 106.61 = 423.77
3. (3.88+3.99) X 69.31 = 271.69
4. (3.88+3.97) X 21.10 = 82.20
5. (3.84+3.29) X 10.59 = 89.28
6. (2.81+3.04) X 6.65 = 18.96
7. (3.86+3.91) X 26.54 = 104.43
8. (1.69+1.43) X 22.11 = 33.88
9. (1.38+1.00) X 10.48 = 11.94
10. (21.02+21.00) X 1.00 = 21.01
11. (21.89+21.93) X 1.00 = 21.91
12. (20.99+20.99) X 4.74 = 48.66
13. (20.98+20.47) X 8.33 = 160.20
TOTAL = 1888.00 sqm



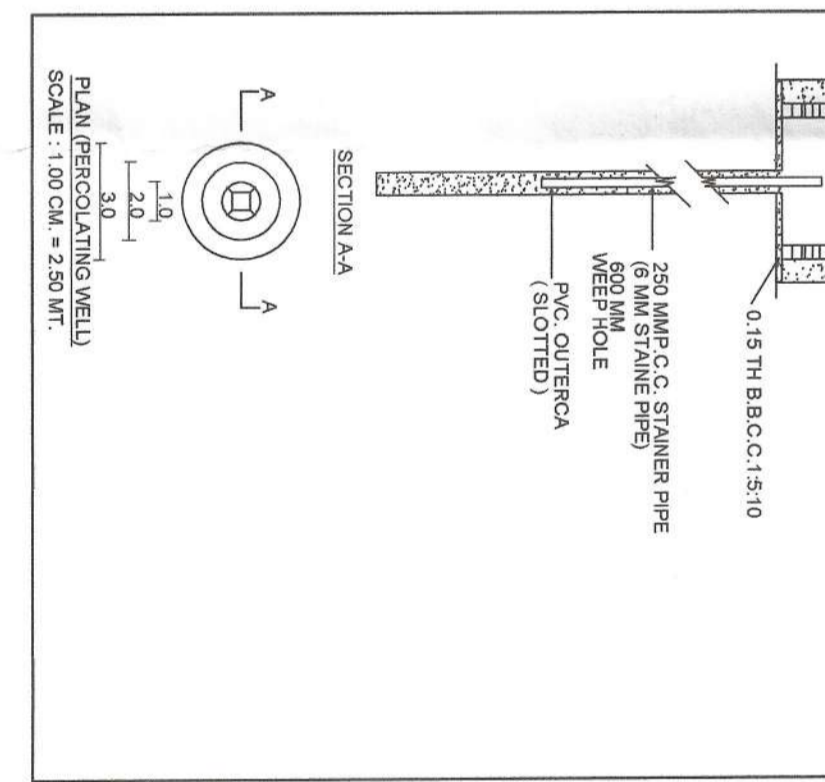
KEY PLAN
 SCALE :- 1.0 CM = 79.20 MT

LAYOUT PLAN
 SCALE :- 1.0 CM = 5.0 MT

STAMP AND SIGNATURE
 (Official stamps and signatures of the engineer and owner)

COMMON PLOT AREA CALCULATION :-

REQUIRED COMMON PLOT AREA (CPA) (51712.00) = 5171.20 sqm
PROVIDED COMMON PLOT AREA = 5331.42 sqm
COMMON PLOT-1
1. (31.07+34.43) X 118.18 = 3485.00
2. (31.07+34.43) X 26.54 = 484.18
COMMON PLOT-2
1. (31.07+34.43) X 26.54 = 318.50
2. (31.07+34.43) X 26.54 = 318.50
COMMON PLOT-3
1. (31.07+34.43) X 26.54 = 318.50
2. (31.07+34.43) X 26.54 = 318.50
COMMON PLOT-4
1. (31.07+34.43) X 26.54 = 318.50
2. (31.07+34.43) X 26.54 = 318.50
TOTAL = 5331.42 sqm



SUB PLOT AREA CALCULATION	SIZE	SQMT
1	(121.09+18.16) X 63.07 = 188.32	188.32
2	(121.09+18.16) X 63.07 = 188.32	188.32
3	(121.09+18.16) X 63.07 = 188.32	188.32
4	(121.09+18.16) X 63.07 = 188.32	188.32
5	(121.09+18.16) X 63.07 = 188.32	188.32
6	(121.09+18.16) X 63.07 = 188.32	188.32
7	(121.09+18.16) X 63.07 = 188.32	188.32
8	(121.09+18.16) X 63.07 = 188.32	188.32
9	(121.09+18.16) X 63.07 = 188.32	188.32
10	(121.09+18.16) X 63.07 = 188.32	188.32
11	(121.09+18.16) X 63.07 = 188.32	188.32
12	(121.09+18.16) X 63.07 = 188.32	188.32
13	(121.09+18.16) X 63.07 = 188.32	188.32
14	(121.09+18.16) X 63.07 = 188.32	188.32
15	(121.09+18.16) X 63.07 = 188.32	188.32
16	(121.09+18.16) X 63.07 = 188.32	188.32
17	(121.09+18.16) X 63.07 = 188.32	188.32
18	(121.09+18.16) X 63.07 = 188.32	188.32
19	(121.09+18.16) X 63.07 = 188.32	188.32
20	(121.09+18.16) X 63.07 = 188.32	188.32
21	(121.09+18.16) X 63.07 = 188.32	188.32
22	(121.09+18.16) X 63.07 = 188.32	188.32
23	(121.09+18.16) X 63.07 = 188.32	188.32
24	(121.09+18.16) X 63.07 = 188.32	188.32
25	(121.09+18.16) X 63.07 = 188.32	188.32
26	(121.09+18.16) X 63.07 = 188.32	188.32
27	(121.09+18.16) X 63.07 = 188.32	188.32
28	(121.09+18.16) X 63.07 = 188.32	188.32
29	(121.09+18.16) X 63.07 = 188.32	188.32
30	(121.09+18.16) X 63.07 = 188.32	188.32
31	(121.09+18.16) X 63.07 = 188.32	188.32
32	(121.09+18.16) X 63.07 = 188.32	188.32
33	(121.09+18.16) X 63.07 = 188.32	188.32
34	(121.09+18.16) X 63.07 = 188.32	188.32
TOTAL		31033.09

SANITARY CALCULATION OF RESIDENTIAL

NO OF USERS	REQUIRED	PROVIDED
NO OF TOILETS	REQUIRED	PROVIDED
SOAK WELLS	REQUIRED	PROVIDED
NO OF WELLS	REQUIRED	PROVIDED
NO OF WELLS	REQUIRED	PROVIDED

PROPOSED PLAN SHOWING RESIDENTIAL SUB PLOTTING
 ON VILLAGE SURVEY NO. 18 PAKI T. 18 PAKI T. DIST SURVEY NO. - M44
 AT VILLAGE - ANKAMPUR TAL. DHOLETRA CDTT - AHMEDABAD

SCALE :- 1:1 CM = 5.0 MT

ZONE :- RESIDENTIAL

AREA TABLE

AREA OF SURVEY NO. - 18 PAKI T.	29419.00
AREA OF SURVEY NO. - 18 PAKI T.	18886.00
AREA OF CITY SURVEY NO. - M44	2795.00
TOTAL AREA	59110.00
AREA GOING IN ROAD LINE	1888.00
NET PLOT AREA	5722.00
REQUIRED COMMON PLOT (CPA)	5171.20
PROVIDED COMMON PLOT	5331.41
TOTAL SUB PLOT AREA	31033.09

TREE MAINTAINANCE CALCULATION

REQUIRED = (53610.00 * 5) / 200 = 1340.25 SQ. FT.	1341 NOS.
PROVIDED = 1341 NOS.	1341 NOS.

PERCOLATING WELL CALCULATION

REQUIRED = 53610.00 / 4000 = 13.40 NOS. (SW - 14 NOS.)	14 NOS.
PROVIDED = 14 NOS.	14 NOS.

NOTE :-
 MT = METER
 FT = FEET
 (A)-(B) = CROSS OVER ROAD
 O.S. = OPEN SPACE
 ALL DIMENSIONS ARE IN METER

OWNERS NAME SIGNATURE
 (Signature and stamp of the owner)

ENGINEER
 (Signature and stamp of the engineer)

STAMP AND SIGNATURE
 (Official stamps and signatures of the engineer and owner)

PROPOSED PLAN SHOWING RESIDENTIAL SUB PLOTTING AT VILLAGE: AMANDPUR TAL. DHOLERA DIST. AHMEDABAD

SHEET NO - 3/74
 ZONE :- RESIDENTIAL
 BUILTUP AREA TABLE
 PROPOSED BUILTUP AREA ON GROUND FLOOR
 PROPOSED BUILTUP AREA ON ALL FLOORS
 F.S.I. AREA TABLE
 PROPOSED BUILTUP AREA ON GROUND FLOOR
 PROPOSED BUILTUP AREA ON ALL FLOORS

SUB PLOT NO	SIZE	NOS	SQFT
1	14.40 X 5.50 = 79.20	79.20 X 1	79.20
2	7.20 X 11.70 = 84.24	84.24 X 1	84.24
3	14.40 X 5.50 = 79.20	79.20 X 1	79.20
4	14.40 X 5.50 = 79.20	79.20 X 1	79.20
5	14.40 X 5.50 = 79.20	79.20 X 1	79.20
6	14.40 X 5.50 = 79.20	79.20 X 1	79.20
7	14.40 X 5.50 = 79.20	79.20 X 1	79.20
8	14.40 X 5.50 = 79.20	79.20 X 1	79.20
9	14.40 X 5.50 = 79.20	79.20 X 1	79.20
10	14.40 X 5.50 = 79.20	79.20 X 1	79.20
11	14.40 X 5.50 = 79.20	79.20 X 1	79.20
12	14.40 X 5.50 = 79.20	79.20 X 1	79.20
13	14.40 X 5.50 = 79.20	79.20 X 1	79.20
14	14.40 X 5.50 = 79.20	79.20 X 1	79.20
15	14.40 X 5.50 = 79.20	79.20 X 1	79.20
16	14.40 X 5.50 = 79.20	79.20 X 1	79.20
17	14.40 X 5.50 = 79.20	79.20 X 1	79.20
18	14.40 X 5.50 = 79.20	79.20 X 1	79.20
19	14.40 X 5.50 = 79.20	79.20 X 1	79.20
20	14.40 X 5.50 = 79.20	79.20 X 1	79.20
21	14.40 X 5.50 = 79.20	79.20 X 1	79.20
22	14.40 X 5.50 = 79.20	79.20 X 1	79.20
23	14.40 X 5.50 = 79.20	79.20 X 1	79.20
24	14.40 X 5.50 = 79.20	79.20 X 1	79.20
25	14.40 X 5.50 = 79.20	79.20 X 1	79.20
26	14.40 X 5.50 = 79.20	79.20 X 1	79.20
27	14.40 X 5.50 = 79.20	79.20 X 1	79.20
28	14.40 X 5.50 = 79.20	79.20 X 1	79.20
29	14.40 X 5.50 = 79.20	79.20 X 1	79.20
30	14.40 X 5.50 = 79.20	79.20 X 1	79.20
31	14.40 X 5.50 = 79.20	79.20 X 1	79.20
32	14.40 X 5.50 = 79.20	79.20 X 1	79.20
33	14.40 X 5.50 = 79.20	79.20 X 1	79.20
34	14.40 X 5.50 = 79.20	79.20 X 1	79.20
35	14.40 X 5.50 = 79.20	79.20 X 1	79.20
36	14.40 X 5.50 = 79.20	79.20 X 1	79.20
37	14.40 X 5.50 = 79.20	79.20 X 1	79.20
38	14.40 X 5.50 = 79.20	79.20 X 1	79.20
39	14.40 X 5.50 = 79.20	79.20 X 1	79.20
40	14.40 X 5.50 = 79.20	79.20 X 1	79.20
41	14.40 X 5.50 = 79.20	79.20 X 1	79.20
42	14.40 X 5.50 = 79.20	79.20 X 1	79.20
43	14.40 X 5.50 = 79.20	79.20 X 1	79.20
44	14.40 X 5.50 = 79.20	79.20 X 1	79.20
45	14.40 X 5.50 = 79.20	79.20 X 1	79.20
46	14.40 X 5.50 = 79.20	79.20 X 1	79.20
47	14.40 X 5.50 = 79.20	79.20 X 1	79.20
48	14.40 X 5.50 = 79.20	79.20 X 1	79.20
49	14.40 X 5.50 = 79.20	79.20 X 1	79.20
50	14.40 X 5.50 = 79.20	79.20 X 1	79.20
51	14.40 X 5.50 = 79.20	79.20 X 1	79.20
52	14.40 X 5.50 = 79.20	79.20 X 1	79.20
53	14.40 X 5.50 = 79.20	79.20 X 1	79.20
54	14.40 X 5.50 = 79.20	79.20 X 1	79.20
55	14.40 X 5.50 = 79.20	79.20 X 1	79.20
56	14.40 X 5.50 = 79.20	79.20 X 1	79.20
57	14.40 X 5.50 = 79.20	79.20 X 1	79.20
58	14.40 X 5.50 = 79.20	79.20 X 1	79.20
59	14.40 X 5.50 = 79.20	79.20 X 1	79.20
60	14.40 X 5.50 = 79.20	79.20 X 1	79.20
61	14.40 X 5.50 = 79.20	79.20 X 1	79.20
62	14.40 X 5.50 = 79.20	79.20 X 1	79.20
63	14.40 X 5.50 = 79.20	79.20 X 1	79.20
64	14.40 X 5.50 = 79.20	79.20 X 1	79.20
65	14.40 X 5.50 = 79.20	79.20 X 1	79.20
66	14.40 X 5.50 = 79.20	79.20 X 1	79.20
67	14.40 X 5.50 = 79.20	79.20 X 1	79.20
68	14.40 X 5.50 = 79.20	79.20 X 1	79.20
69	14.40 X 5.50 = 79.20	79.20 X 1	79.20
70	14.40 X 5.50 = 79.20	79.20 X 1	79.20
71	14.40 X 5.50 = 79.20	79.20 X 1	79.20
72	14.40 X 5.50 = 79.20	79.20 X 1	79.20
73	14.40 X 5.50 = 79.20	79.20 X 1	79.20
74	14.40 X 5.50 = 79.20	79.20 X 1	79.20
75	14.40 X 5.50 = 79.20	79.20 X 1	79.20
76	14.40 X 5.50 = 79.20	79.20 X 1	79.20
77	14.40 X 5.50 = 79.20	79.20 X 1	79.20
78	14.40 X 5.50 = 79.20	79.20 X 1	79.20
79	14.40 X 5.50 = 79.20	79.20 X 1	79.20
80	14.40 X 5.50 = 79.20	79.20 X 1	79.20
81	14.40 X 5.50 = 79.20	79.20 X 1	79.20
82	14.40 X 5.50 = 79.20	79.20 X 1	79.20
83	14.40 X 5.50 = 79.20	79.20 X 1	79.20
84	14.40 X 5.50 = 79.20	79.20 X 1	79.20
85	14.40 X 5.50 = 79.20	79.20 X 1	79.20
86	14.40 X 5.50 = 79.20	79.20 X 1	79.20
87	14.40 X 5.50 = 79.20	79.20 X 1	79.20
88	14.40 X 5.50 = 79.20	79.20 X 1	79.20
89	14.40 X 5.50 = 79.20	79.20 X 1	79.20
90	14.40 X 5.50 = 79.20	79.20 X 1	79.20
91	14.40 X 5.50 = 79.20	79.20 X 1	79.20
92	14.40 X 5.50 = 79.20	79.20 X 1	79.20
93	14.40 X 5.50 = 79.20	79.20 X 1	79.20
94	14.40 X 5.50 = 79.20	79.20 X 1	79.20
95	14.40 X 5.50 = 79.20	79.20 X 1	79.20
96	14.40 X 5.50 = 79.20	79.20 X 1	79.20
97	14.40 X 5.50 = 79.20	79.20 X 1	79.20
98	14.40 X 5.50 = 79.20	79.20 X 1	79.20
99	14.40 X 5.50 = 79.20	79.20 X 1	79.20
100	14.40 X 5.50 = 79.20	79.20 X 1	79.20
TOTAL		1392.89	

આજીવન સુધી અમને આ પ્લોટ પરથી મળેલ સર્વેક્ષણ અને માપનના આધારે આ પ્લોટને આકાર અને કદમાં વિભાજિત કરવામાં આવેલ છે. આ પ્લોટને આકાર અને કદમાં વિભાજિત કરવામાં આવેલ છે. આ પ્લોટને આકાર અને કદમાં વિભાજિત કરવામાં આવેલ છે.

OWNER'S NAME SIGNATURE
 સહાયક મુદતિવાળી સુભાષી
 સહાયક મુદતિવાળી સુભાષી
 સહાયક મુદતિવાળી સુભાષી

ST ENGINEER
 નિર્માણ
 LIC NO: 0116159550462
 શ્રીકાંત એન્જિનિયરિંગ ગ્રાન્ડ-1
 અમદાવાદ

ENGINEER
 નિર્માણ
 LIC NO: 0116159550462
 શ્રીકાંત એન્જિનિયરિંગ ગ્રાન્ડ-1
 અમદાવાદ

